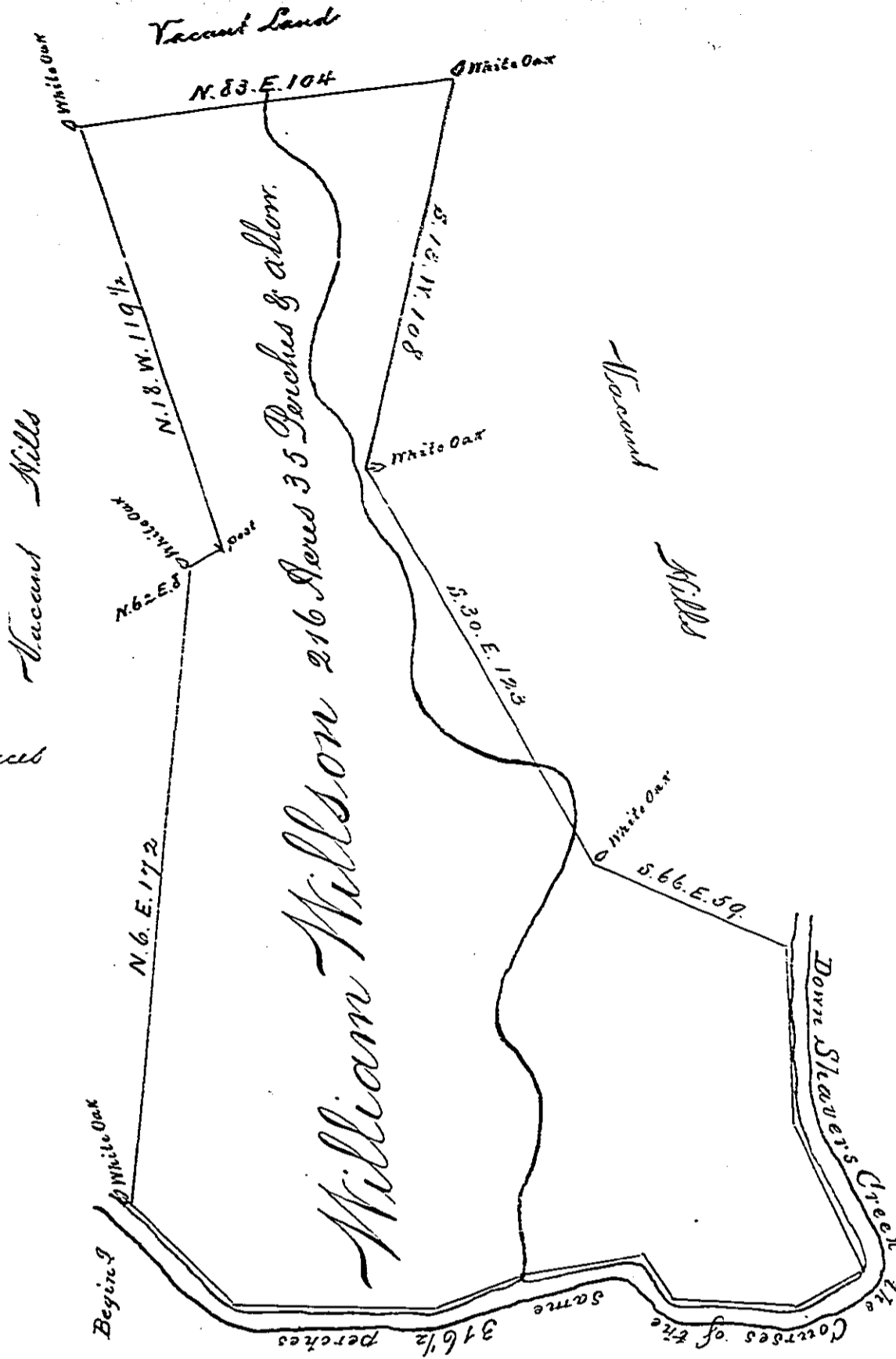


Courses and Distances  
Down the Creek

S 1 E 48 1/2  
 S 25 E 45  
 S 63 W 23  
 N 83 W 34  
 N 38 W 14  
 S 82 W 34  
 S 72 W 24  
 N 87 W 55  
 N 45 W 39  
 316 1/2



The Draught of a Tract of Land called  
 situate on Slavers Creek in the County of Cumberland  
 containing Two Hundred Sixteen Acres 35  
 Perches with the usual Allowance of Six Acres p Cent: for Roads surveyed the  
 22<sup>d</sup> day of April Anno Dom. 1766 - For William Hillson In Pursuance of Warr<sup>t</sup>  
 from the Honble Proprietaries bearing Date at Philad<sup>a</sup> the 3<sup>d</sup> day of June 1763.

Wm Maclay D.S.

To John Lukens Esq<sup>r</sup> S.G.  
 of Pennsylvania }

IN TESTIMONY that the above is a copy of the original remaining on file in the  
 Department of Internal Affairs of Pennsylvania, made con-  
 formably to an Act of Assembly approved the 16th day of  
 February, 1833. I have hereunto set my Hand and caused  
 the Seal of said Department to be affixed at Harrisburg, this

fourth day of August 1896

James W. Pitts  
 Secretary of Internal Affairs.